



---

---

---

---

---

---

---



---

---

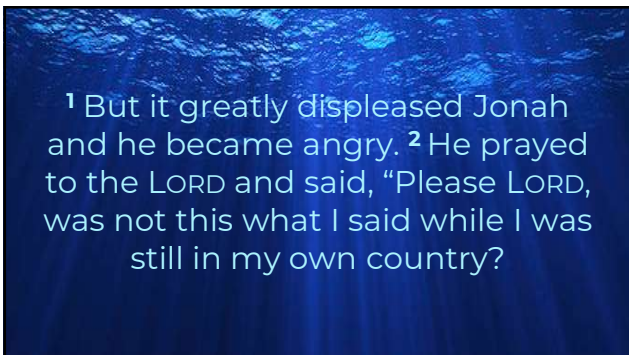
---

---

---

---

---



---

---

---

---

---

---

---

Therefore in order to forestall this I fled to Tarshish; for I knew that You are a gracious and compassionate God, slow to anger and abundant in lovingkindness, and one who relents concerning calamity.

---

---

---

---

---

---

---

<sup>3</sup>Therefore now, O LORD, please take my life from me, for death is better to me than life."

<sup>4</sup>The LORD said, "Do you have good reason to be angry?"

---

---

---

---

---

---

---

<sup>5</sup>Then Jonah went out from the city and sat east of it. There he made a shelter for himself and sat under it in the shade until he could see what would happen in the city.

---

---

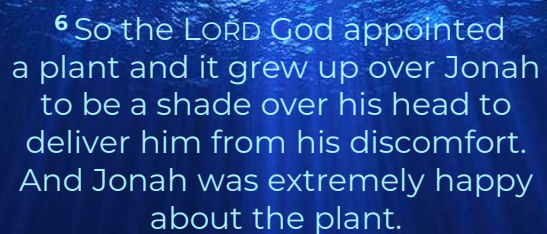
---

---

---

---

---



<sup>6</sup> So the LORD God appointed a plant and it grew up over Jonah to be a shade over his head to deliver him from his discomfort. And Jonah was extremely happy about the plant.

---

---

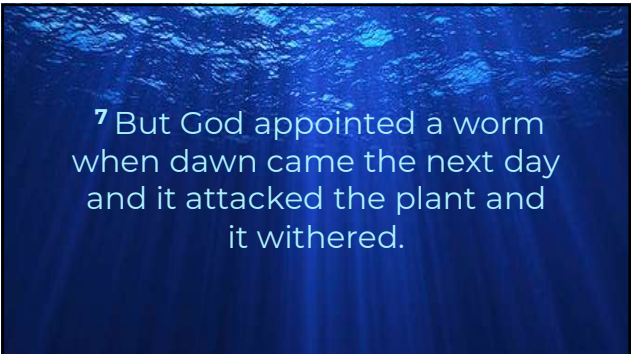
---

---

---

---

---



<sup>7</sup> But God appointed a worm when dawn came the next day and it attacked the plant and it withered.

---

---

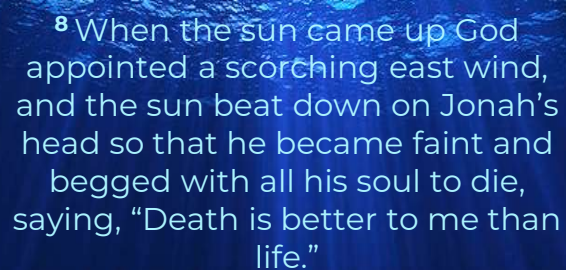
---

---

---

---

---



<sup>8</sup> When the sun came up God appointed a scorching east wind, and the sun beat down on Jonah's head so that he became faint and begged with all his soul to die, saying, "Death is better to me than life."

---

---

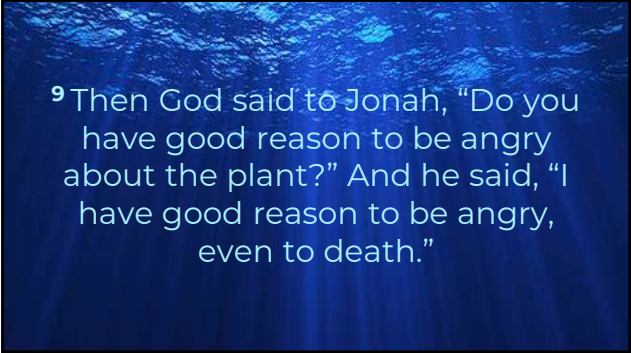
---

---

---

---

---



<sup>9</sup> Then God said to Jonah, "Do you have good reason to be angry about the plant?" And he said, "I have good reason to be angry, even to death."

---

---

---

---

---

---

---



<sup>10</sup> Then the LORD said, "You had compassion on the plant for which you did not work and which you did not cause to grow, which came up overnight and perished overnight."

---

---

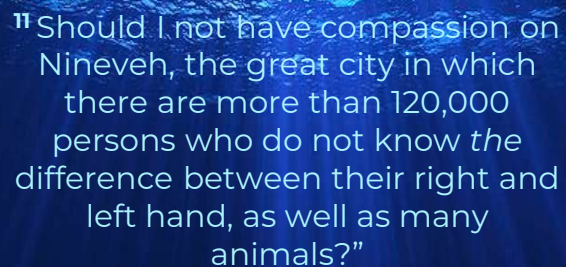
---

---

---

---

---



<sup>11</sup> Should I not have compassion on Nineveh, the great city in which there are more than 120,000 persons who do not know *the* difference between their right and left hand, as well as many animals?"

---

---


---

---

---

---

---



## **Three Looks at God's Heart of Compassion**

---

---

---

---

---

---

---



## **God's Presence in Jonah's Rebellion**

<sup>1</sup> But it greatly displeased Jonah and he became angry. <sup>2</sup> He prayed to the LORD and said, "Please LORD, was not this what I said while I was still in my own country?"

---

---

---

---

---

---

---



## **God's Patience in Jonah's Resentment**

<sup>8</sup> When the sun came up God appointed a scorching east wind, and the sun beat down on Jonah's head so that he became faint and begged with all his soul to die, saying, "Death is better to me than life."

---

---

---

---

---

---

---



## God's Perspective in Jonah's Rejection

"Should I not have compassion on Nineveh, the great city in which there are more than 120,000 persons who do not know *the* difference between their right and left hand, as well as many animals?"

---

---

---

---

---

---

---

## Yahweh Reasons with Jonah

- You invested nothing in the plant, but I am fully invested in my human creatures.
- You had the plant for only an instant, but I have cherished the Ninevites for a long time.
- Your plant is of little value & consequence, but there are 120,000 soul-bearing lives in Nineveh.
- You defied me with great knowledge. The Ninevites sin in ignorance.

---

---

---

---

---

---

---

**God's Compassion *FOR* Us  
is Meant to Produce His  
Compassion *IN* Us.**

**Are We Loving with  
Next-Level Love?**

---

---

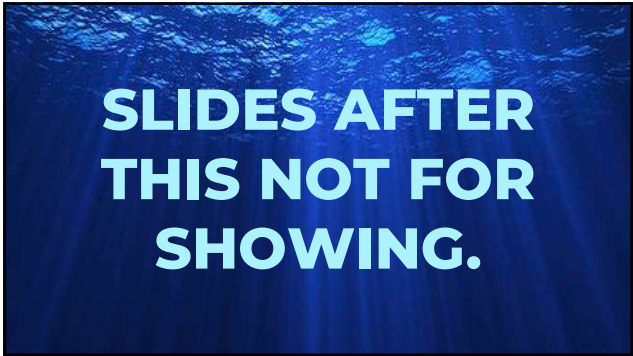
---

---

---

---

---



---

---

---

---

---

---

---